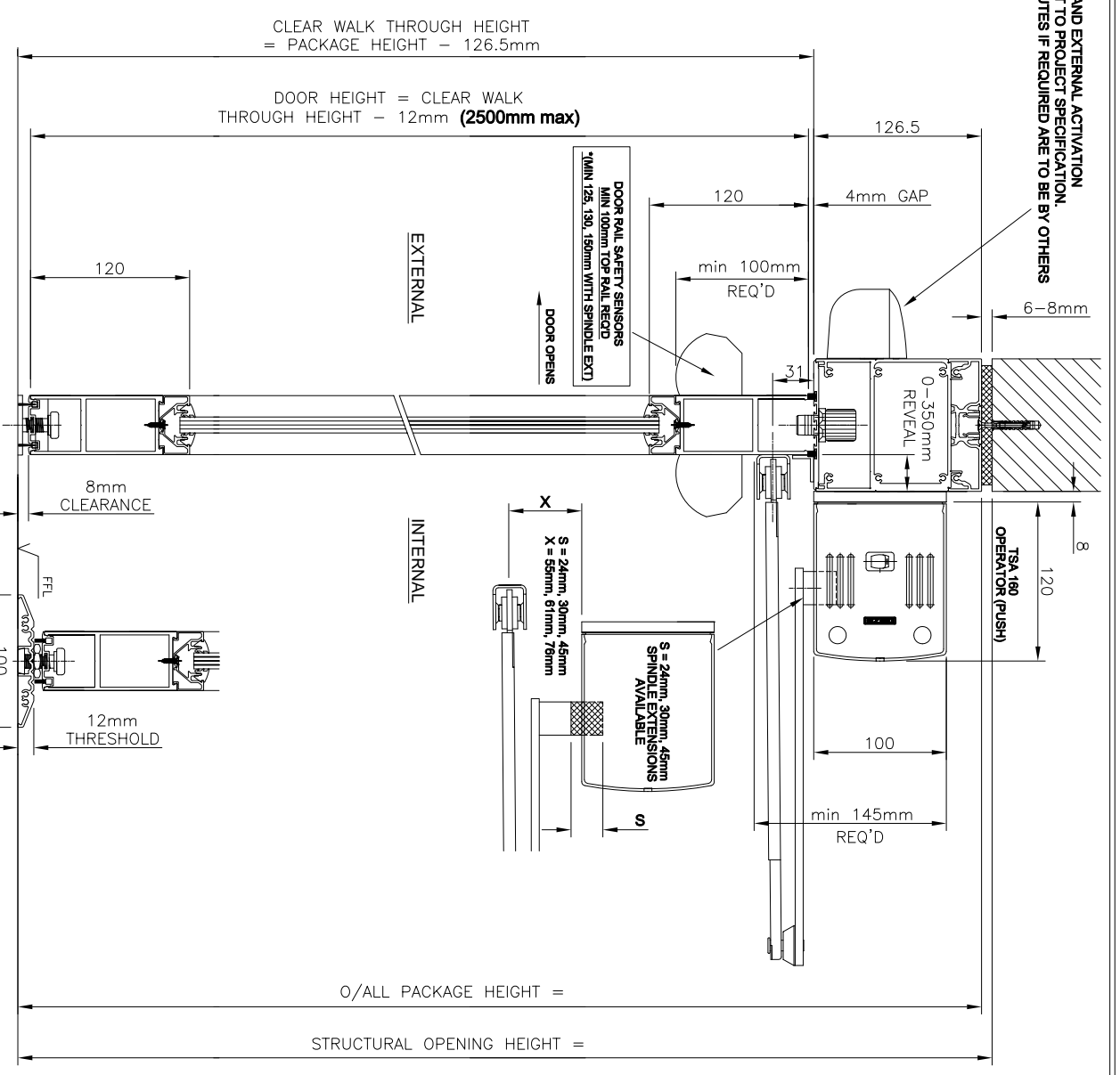


BARRIERS MAY BE REQUIRED

a) TO SAFEGUARD AGAINST PEDESTRIAN TRAFFIC APPROACHING FROM THE SIDE INTO THE SWIFT AREA (OPENING AND CLOSING) OF THE SWING DOOR.

b) TO DIRECT PEDESTRIAN TRAFFIC TOWARDS THE DOORWAY OPENING

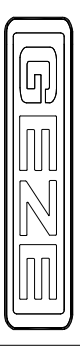
PLEASE NOTE BARRIERS SHOULD BE POSITIONED IN SUCH A WAY THAT THEY DO NOT CAUSE AN OBSTRUCTION, OR INHIBIT MEANS OF ESCAPE OR REDUCE THE CLEAR OPENING.



PROJECT SPECIFIC DETAILS

PROJECT :	
FINISH :	
GLASS :	
LOCKING :	
CONTROLS :	
ACTIVATION :	
SAFETY :	

Revision	Drawn	Date	Reason for Change
B	GH	28/4/09	TRANSOM DOOR STOP CORRECTED
A	GH	20/1/09	MIN DOOR WIDTHS CHANGED



Drawing No. TSA160 - 07

Title TSA 160 TRANSOM MOUNT PUSH (V ARM) - Single RH with door & frame in Alum profiles (single glazed)

Drawn GH Appd NTS Scale Date SEP 08

GEZE UK Ltd
Blenheim Way
Fradley Park
Lichfield
Staffordshire. www.geze.com
WS13 8SY TEL 01543 443000 FAX 01543 443001

This drawing shows the actual stage of product development at the date indicated. It is subject to change without notice. The drawing remains the property of GEZE and is made available to you on the understanding that you will not copy, reproduce, or disseminate it without the express consent of GEZE.